

Crap & Win!
iPad Pro
 Check out our contest!
suzuka.com.my/promotion | T&C Apply



STRATO
VEROSA
 LIME PAINT

EDITION
01



Matte & smooth
 INTERIOR LIME PAINTS

- Complies to the
- American California Proposition 65 Standard.
 - LEED, U.S. Green Building Council Standard.



Free
Product Training
 For All Industry Professionals
suzuka.com.my/career-training



WALL FINISH PROFESSIONALS

 suzuka.com.my
 [suzuka.group](https://www.suzuka.group)
 Hotline : +6012-258 7388

⚠ Photos of the products shown in this catalogue may vary in color due to lighting condition & printing.
 We suggest you examine actual product samples before ordering.

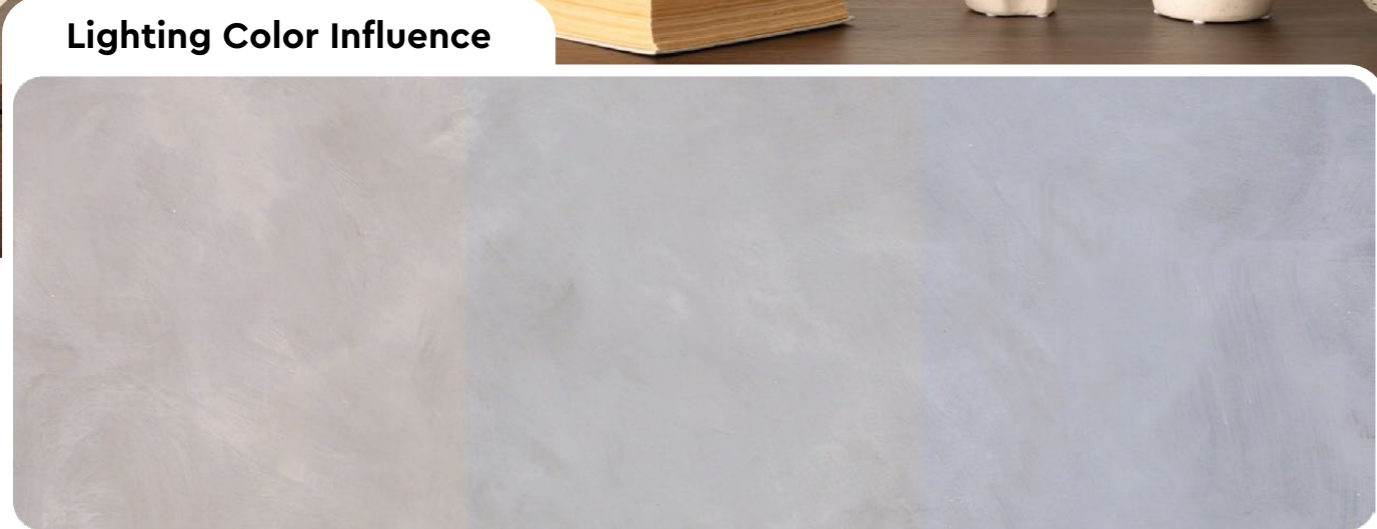


SVR-E1-2410

WALL FINISH PROFESSIONALS.

SINCE 1977

STRATO®
Verosa
 LIME PAINT



Warm Light

Neutral Light

Cool Light

SVR



SVR 101 - 118

A natural, eco-friendly lime paint made from pure lime and inorganic pigments, offering a beautiful matte finish.

It's breathable and perfect for interior wall surfaces. Suitable for homes, offices, cafes, restaurants and commercial building.

Appearance

Low Sheen	● ● ● ● ●	High Sheen
Smooth Texture	● ● ● ● ●	Rough Texture
Matte	● ● ● ● ●	Metallic

Features

• Interior use only

- Low VOC & Odor
- Natural Composition & Eco-friendly
- Formaldehyde & Lead Free
- Breathable
- Non-toxic
- High Coverage
- Applicable on Ceiling
- Easy Application & DIY Friendly
- Easy Maintenance
- Matte Finish

Complies to the
 • American California Proposition 65 Standards
 • LEED, U.S. Green Building Council Standards

1 All color shown are as close to the actual Suzuka® Strato® colors as modern printing techniques permit, nonetheless, there are still color/tone differences. **We highly recommend seeing actual samples before ordering.**

Create two different patterns with **STRATO VEROSA** using different tools and techniques!

Sponge Pattern

Application with sponge.

Brush Pattern

Application with brush.

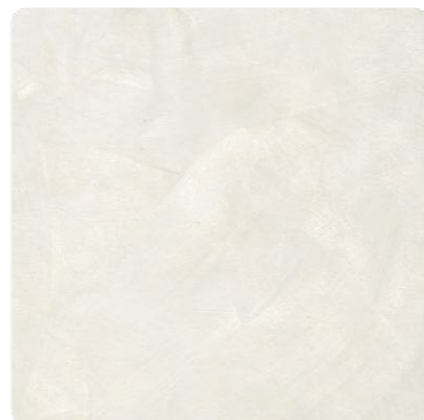
SVR-101 Galactic Grey



SVR-102 Windy Grey



SVR-103 Cotton Foil



SVR-104 Wool Accent

SVR-111 Blonde Creme

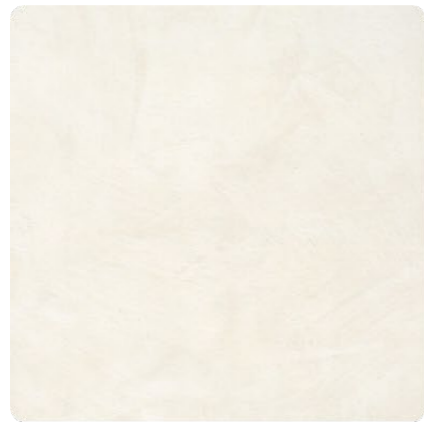


SVR-108 Birch Paper

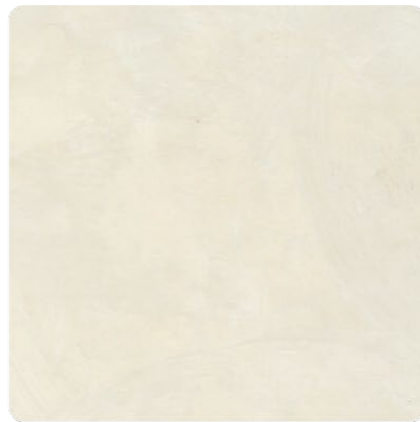


SVR-104 Wool Accent





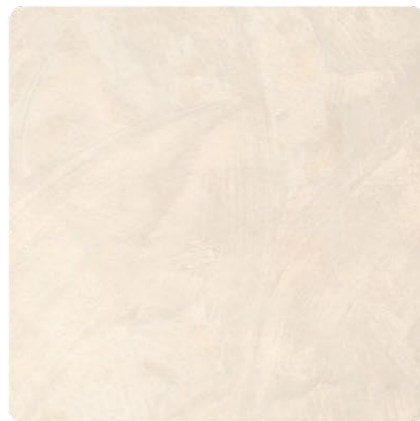
SVR-105 Lucent Moon



SVR-106 Pastel Foam



SVR-107 Gypsum Sands



SVR-108 Birch Paper



SVR-109 Caramel Clay



SVR-110 Bright Beige



SVR-111 Blonde Creme



All color shown are as close to the actual Suzuka® Strato® colors as modern printing techniques permit, nonetheless, there are still color/tone differences.

We highly recommend seeing actual samples before ordering.



SVR-107 Gypsum Sands



SVR-116 Dusk Dew



SVR-118 Terra Cotta



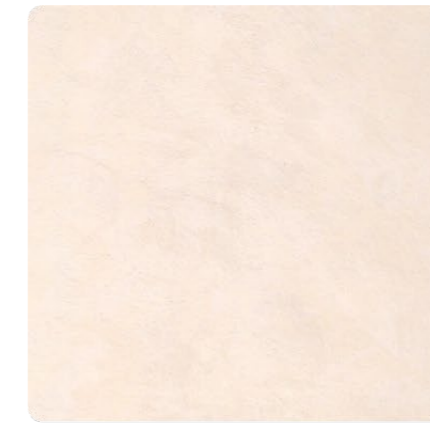
SVR-103 Cotton Foil



SVR-110 Bright Beige



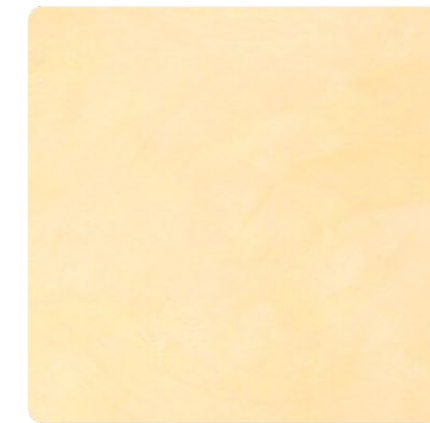
SVR-113 Blossom Blush



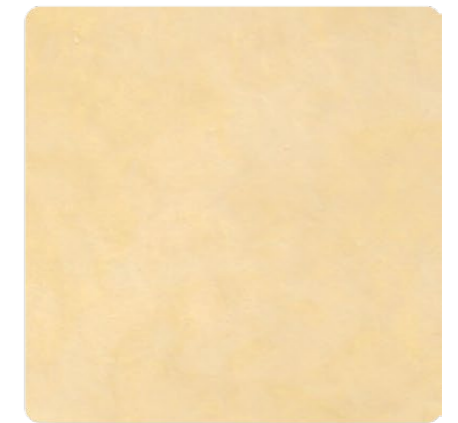
SVR-112 Soft Bloom



SVR-113 Blossom Blush



SVR-114 Lemon Lustre

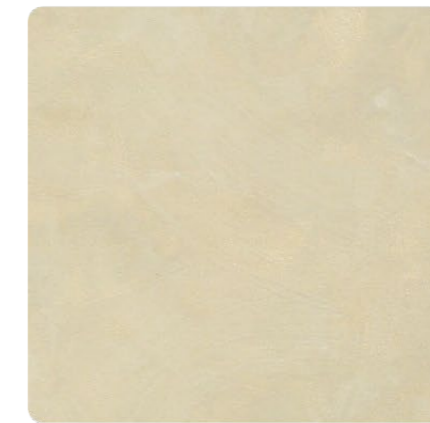


SVR-115 Summer Scent

SVR-117 Classic Taupe



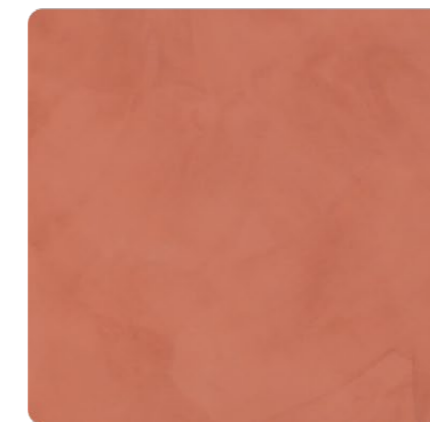
SVR-101 Galactic Grey



SVR-116 Dusk Dew



SVR-117 Classic Taupe



SVR-118 Terra Cotta



All color shown are as close to the actual Suzuka® Strato® colors as modern printing techniques permit, nonetheless, there are still color/tone differences.

We highly recommend seeing actual samples before ordering.



Application Technique

Preparation:

- Surface shall be dry and free from dirt, oil, grease and foreign matters.
- Surface unevenness, crack, and the like shall be treated with cement filler.
- Primer is required for stained or painted surface with color other than white.

IMPORTANT:

Color may vary on application technique & amount of material used.

Dilution Guide:

Primer : Max 3% of clean water | Texture : Do not dilute.



1 Primer (Optional)

Roll 1-2 layers of primer on the entire surface. Allow 1 hour to dry between the layers.
(The primer can be diluted with maximum 3% of clean water)

Tool: Roller

Texture Coat Options

2A Texture Coat Sponge Pattern



(1) Dampen the sponge with water and wring out excess moisture. This helps the paint spread more evenly and prevents it from soaking too deeply into the sponge.

(2) Lightly dip the sponge into the paint, ensuring it picks up a small, even amount. Avoid overloading the sponge with paint.



(3) Gently press the sponge onto the surface, using a light circular motion.

Start at the top of the wall and work your way down in sections. Overlap each stipple slightly to blend the edges & avoid harsh lines. Rotate the sponge occasionally to vary the pattern & prevent repetitive textures. **Apply 2 layers.**



(4) For the final layer, lightly dampen the sponge with Strato Verosa and gently rub in random circulation motions to enhance the pattern.

Let dry for 1-2 hours between coats and to fully dry in 24 hours.

2B Texture Coat Brush Pattern



(1) Work the paint into the surface using cross-hatch strokes (a combination of vertical and horizontal strokes).

Apply 2 layers.

Let dry for 1-2 hours between coats and to fully dry in 24 hours.



Recommended Tools: Roller, Brush & Sponge

SUZUKA® WALL SEALER PRO

“Make your wall finishes last longer!”



Superior primer for concrete, skimmed or masonry surfaces.

This sealer that has good substrate penetration abilities to increase adhesion of product to prevent chalking or peeling off. It has excellent alkaline resistance properties that can prevent efflorescence. It is an ideal base coat for any SUZUKA® or any wall finish products.

Packing Size:

- 1L
- 5L
- 20L

Coverage	Drying Time (hour)		
6.5 - 8.5 m ² /l/coat	Surface Dry : 1	Hard Dry : 5	Recoating : 5
	Substrate Temperature: 23°C - 26°C		

Suitable for:

- Masonry wall
- Brickwork
- Plaster
- Skimmed Coat
- Asbestos free substrate

Features:

- Excellent alkaline resistance to prevent efflorescence.
- Good for new walls and repainting.
- Prevents skim coat from chalking & peeling off.
- Extremely good penetration.
- Excellent adhesion.
- Exterior and interior use.
- Applicable with brush, roller or spray gun.

Airless Spray	Nozzle 1.8 - 2.0 mm	Spray Angle Degree 65° - 80°	Pressure 210 psi/150kg/cm ²
---------------	---------------------	------------------------------	--



Packing Data

Material	Packing	Coverage (per liter / ±5%)
Strato Primer Natural (Optional)	1 L	7 - 9 sqm
	4 L	28 - 36 sqm
Strato Verosa Texture Coat	1 L	6 - 8 sqm
	4 L	24 - 32 sqm

* Primer & Texture Coat are sold separately